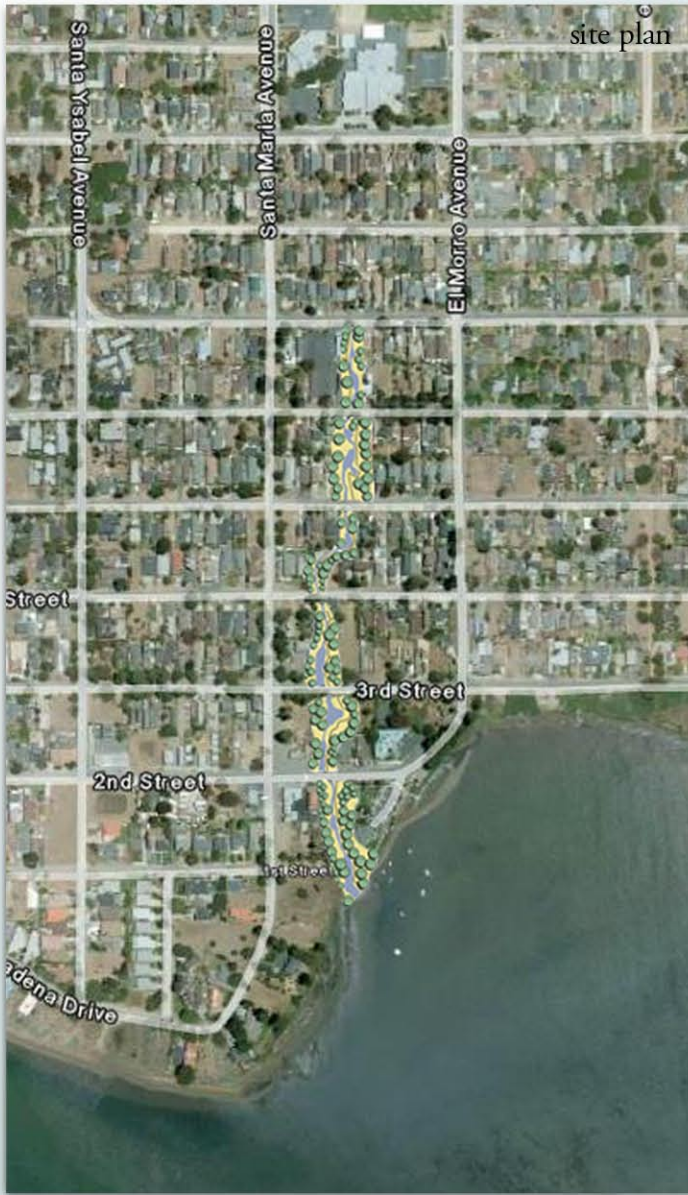


# Los Osos, Moro Bay, CA



A natural drainage wetland with cattails adjacent to a eucalyptus forest in the Sweetwater Nature Preserve in Los Osos. This area naturally treats some of the existing stormwater runoff prior to entering the bay.



Los Osos is a small community located on Moro Bay, a sensitive estuary on the California coast near San Luis Obispo. NSI was engaged by the recently formed Los Osos Community Services District to prepare a plan for innovative storm water management to address both flooding and groundwater contamination problems. The plan identified both implementation and funding strategies to help the community develop solutions in accordance with strict standards for coastal discharges in California.

Working with the Los Osos Community Services District, NSI developed a community wide approach to storm water management that responds to the sensitive setting and natural character of the community while also providing an economical system to reduce pollution discharges to the sensitive Moro Bay estuary. Included in the plan are guidelines for various infiltration options, wetland treatment, sediment traps, and a integrated drainage way, as well as linear park spaces, within this community of 15,000.