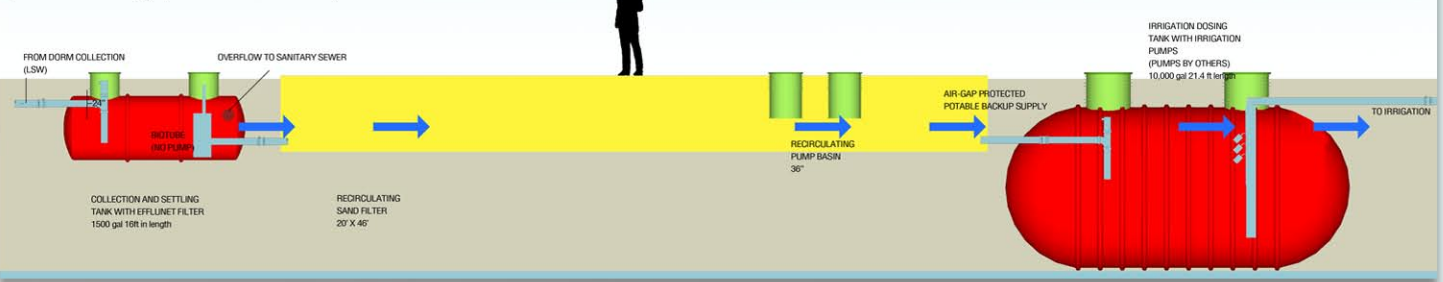


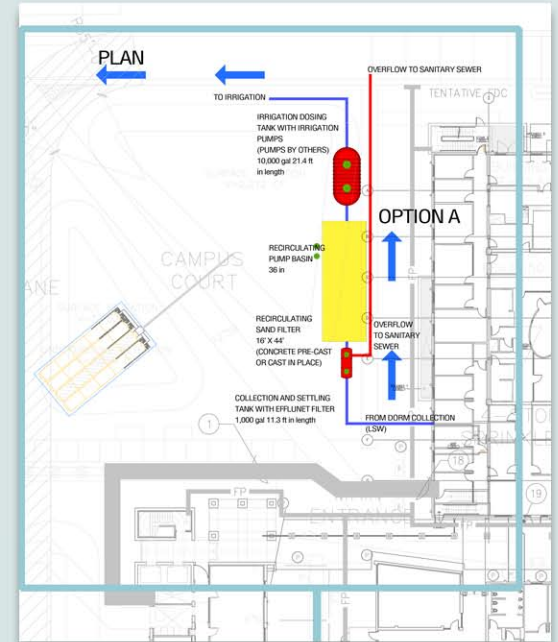


Barrett Honors College, Arizona State University, Tempe, AZ

profile: onsite greywater treatment system



site rendering courtesy of ikon.5 architects



Barrett Honors College, Tempe, Arizona, United States

Barrett Honors College is part of a multi-phased development in ASU's South Campus. Two thirds of the the college's 2,800 students will use the new complex as a housing resource. The facility includes academic spaces, social, dining and recreational facilities, as well as administration offices and the Dean's office. The architecture is designed to accommodate the sun saturated climates of the Southwest and will incorporate local materials and regional concrete techniques. The design team is comprised of ikon.5, DWL of Phoenix, American Campus Communities, LSW Engineers, and NSI.

NSI designed a greywater treatment and reuse system for the new residential buildings 7A and 7B on the Arizona State University Campus. Greywater from building sinks, water fountains, and showers is treated to a reuse standard suitable as a water closet supply and/or an irrigation supply. The Greywater design flow is 10,000 gallons per day.

The onsite greywater treatment and reuse system incorporates the following treatment elements:

- Equalization and filtration tank
- Recirculating sand filter
- Associated pumps, controls and filters for reuse as irrigation
- The irrigation system will be designed by a partner firm.

The final product will be an excellent example of campus housing and achieve a LEED Silver designation.